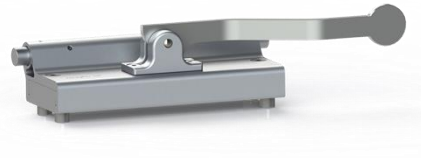


## Technical Data Sheet – MagFly® AP

### Product Description

MagFly® AP is a patented formwork magnet and part of the BT formwork system. Its holding force to mass ratio is unique, as is the unique foot/spring system that allows the magnet to glide effortlessly across the formwork table.



### Product Features

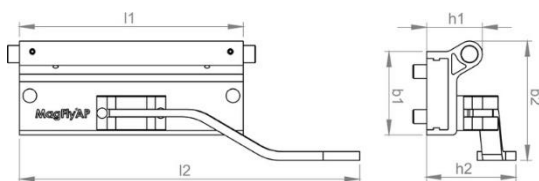
- ::: Very ergonomic design; its low mass and the integrated lever make carrying and handling a piece of cake
- ::: High magnetic holding force with low weight
- ::: Of course, the new MagFly® AP also has the integrated MagFly® technology for exact positioning.
- ::: Precise fixing of the magnet by light hand pressure
- ::: Integrated lifter
- ::: Compact design with integrated adapter for Multi-Form and FlyFrame®.

### Areas of Application

- ::: Shuttering magnet for pallet circulation systems and tilting tables
- ::: Formwork for walls, columns etc.

### Technical Data

Article number	8001067	8001075	8001081
Name	MagFly® AP with right lever	MagFly® AP with left lever	MagFly® AP with lever °90
Adhesive force (N)	22.000	22.000	22.000
L1 (mm)	260	260	260
L2 (mm)	407	407	288
W1 (mm)	96	96	96
H1 (mm)	65	65	65
H2 (mm)	96	96	85



The information in this data sheet was provided with care based on our experience and the respective known state of science and technology but is non-binding. They are to be adapted to the respective building object, intended use and the special local stresses. Provided that this is the case, we ask you to understand that we limit our liability for the information given in this data sheet and accept no liability in the event of intent, gross negligence or infringement of the instructions. In any case, the recognised rules of technology must be observed.

Edition 08/24 - This data sheet has been technically revised. Previous editions are invalid. If a new edition has been technically revised, this edition loses its validity. Please check whether you are in possession of the current edition.